

# COSUMNES SUBBASIN GROUNDWATER FEE STUDY

Galt Irrigation District

July 29, 2021



# PURPOSE OF THE COSUMNES GROUNDWATER FEE PROGRAM

- In September 2014, SGMA was signed into law
- SGMA provides for the “management and use of groundwater in a manner that can be maintained during the planning and implementation horizon without causing undesirable results”
- Groundwater basins must demonstrate sustainability by 2042
- A GSP must be developed for each subbasin
- The District is the GSA for the area within its service boundary
- Absent a funding approach for the GSP State intervention can occur

# FEE PROGRAM BACKGROUND

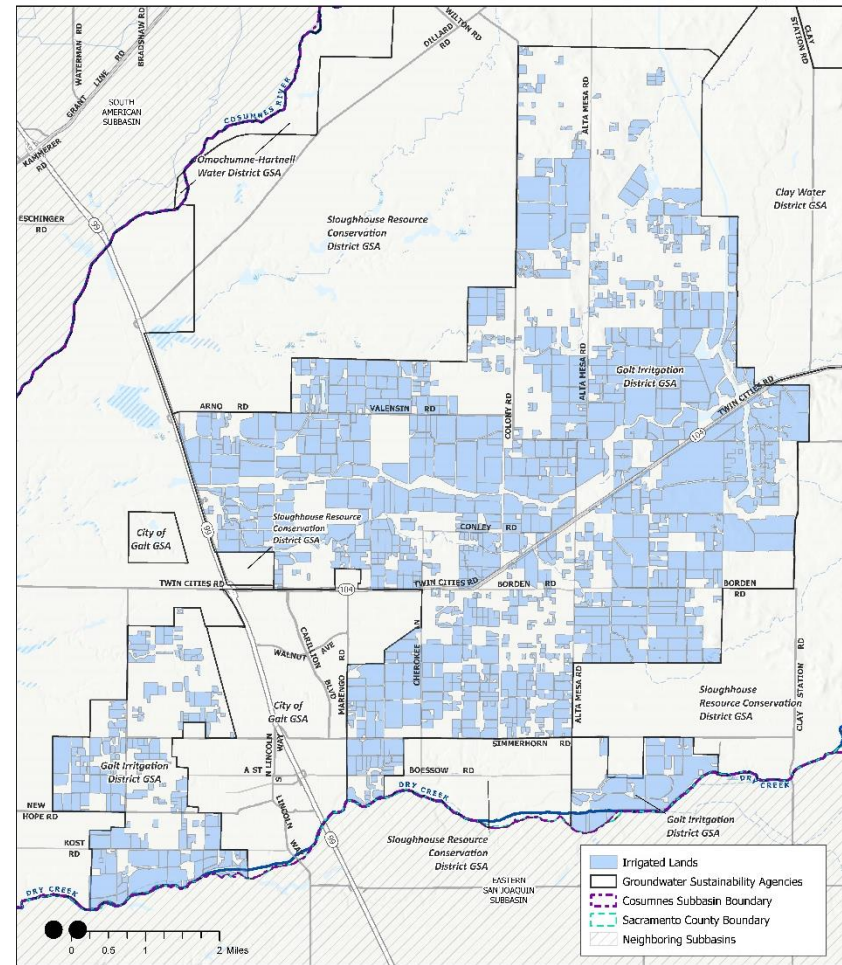
- District's boundaries fall within the Cosumnes Subbasin
- Fee is based on the irrigated agriculture acreage
  - Proxy for groundwater use as groundwater use is generally not metered or monitored for reporting purposes
- Irrigated agriculture acreage from California DWR 2018 Statewide Crop Mapping data
  - Does not include urban or ag-res customers
  - Excludes acreage of less than 1 acre
- Fee funds administrative costs and PMAs
  - Monitoring, data management, financial audit, annual report, project development, etc.

# COSUMNES FEE METHODOLOGY

- Based on irrigated agriculture acreage of the District
- Cosumnes fee study calculated the fee based on total subbasin irrigated agriculture acreage

$$\frac{\$737,500 - (\$20,000 - \$230,000)}{48,754 \text{ irr. ag. acres}} = \$10.00 \text{ per irrigated acre}$$

- District has approximately 17,950 irrigated agriculture acres



Irrigated Lands in the Galt Irrigation District GSA of the Cosumnes Subbasin

More than 17,900 acres of irrigated land covering over 780 parcels

# FEE IMPLEMENTATION

- Fee will be implemented as a regulatory fee under Proposition 26
  - Requires that the fee cannot exceed the cost of governmental activity associated with the program
  - Fee amount allocated to each customer must bear a reasonable relationship to the customer's benefit received
    - Proposed fee reflects the GSP implementation for groundwater users and is based on irrigated acreage as a proxy to groundwater use
- Future year fees may be implemented under a different approach (i.e. Proposition 218)
- Fee will be placed on the County tax rolls for collection

# STATE INTERVENTION FEES

## Proposed Schedule of Fees

Fee Category	Annual Fee Amount	Applicable Parties
Base Filing Fee	\$300 per well	All extractors required to report
Unmanaged Area Rate	\$10 per acre-foot, if metered	Extractors in unmanaged areas
	\$25 per acre-foot, if unmetered	
Probationary Basin Rate	\$40 per acre-foot	Extractors in probationary basins
Interim Plan Rate	\$55 per acre-foot	Extractors in probationary basins where the Board determines an interim plan is required.
De minimis Fee	\$100 per well	Parties that extract, for domestic purposes, two acre-feet or less per year from a probationary basin, If the Board decides the extractions will likely be significant.
Late Fee	25% of total fee amount per month late	Extractors that do not file reports by the due date.

# STUDY SUMMARY

- The fee is based on the irrigated agriculture acreage within the District boundaries
  - Results of the study are a fee of \$10.00 per irrigated agriculture acre
- This fee will be placed on the tax rolls for collection and distribution
- Revenue will be used to fund the Cosumnes subbasin GSP implementation
- Future year fee approach may be revised to reflect working group direction for both subbasin's

# QUESTIONS AN DISCUSSION

---